

postkantoor venlo

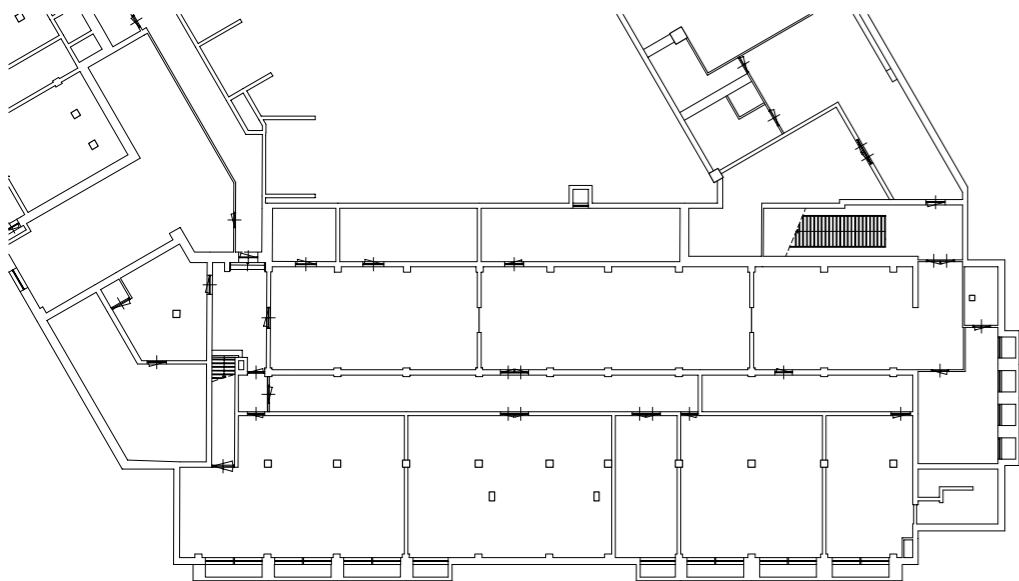
haalbaarheidstudie herbestemming
museum van bommel van dam



diederendirrix architecten
december 2015

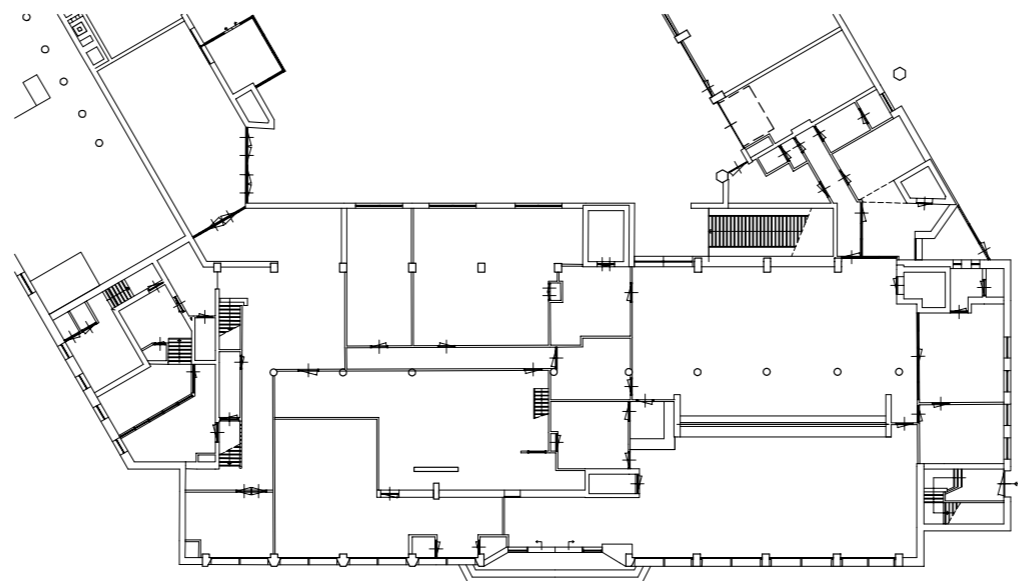


Plattegronden bestand



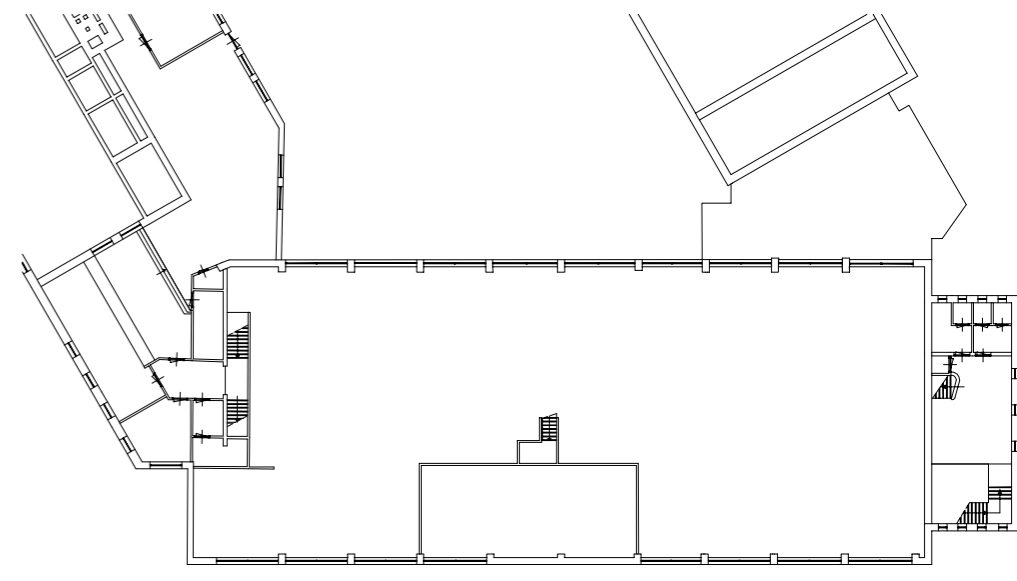
kelder

0 1 5 10m



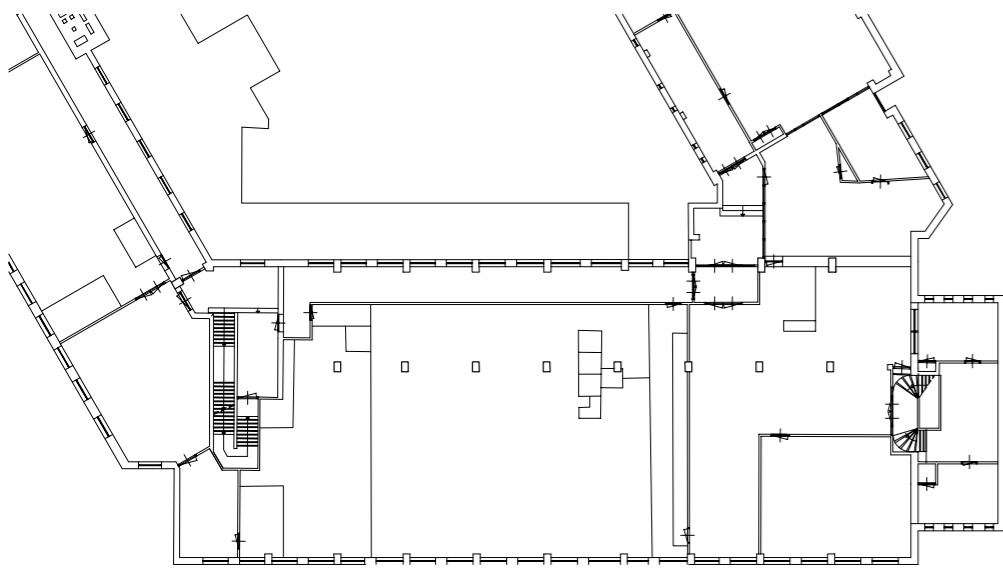
begane grond

0 1 5 10m



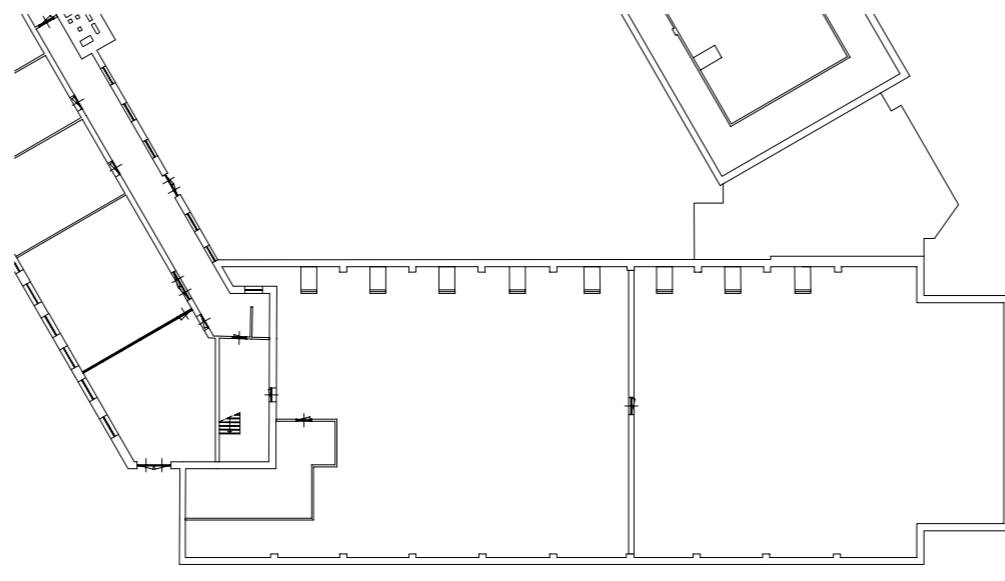
tussenverdieping

0 1 5 10m



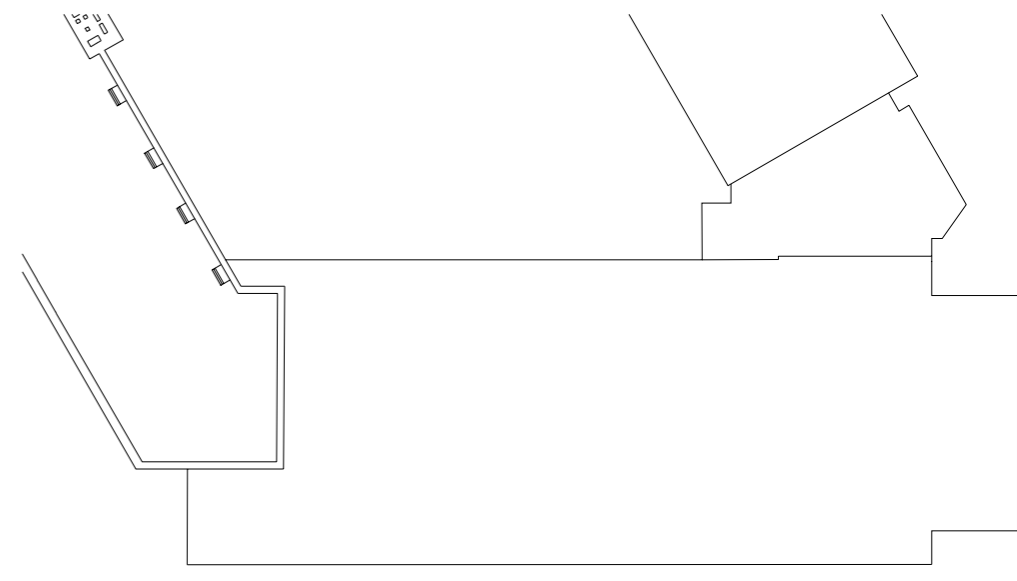
1e verdieping

0 1 5 10m



2e verdieping

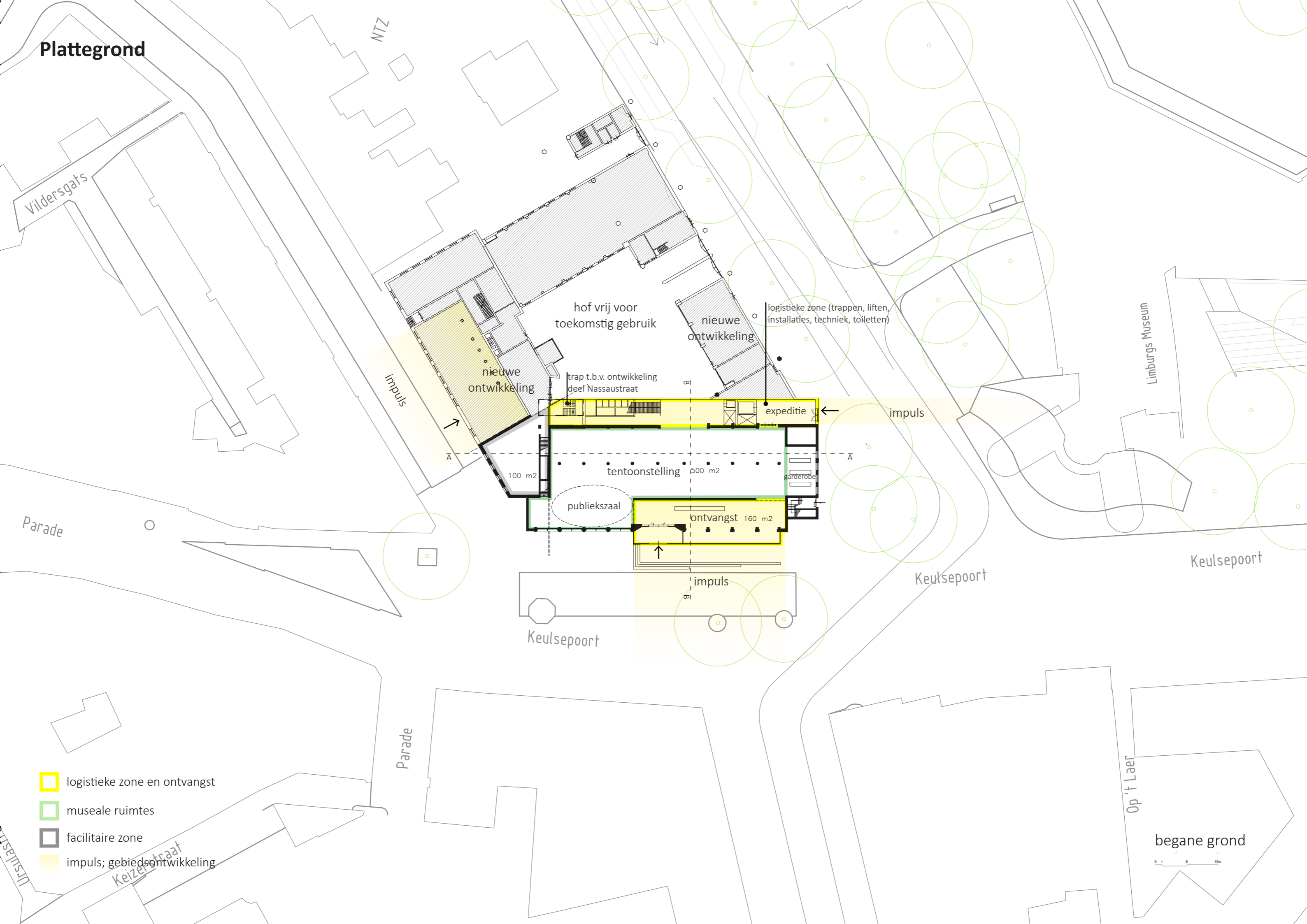
0 1 5 10m







3e verdieping

0 1 5 10m

Plattegrond

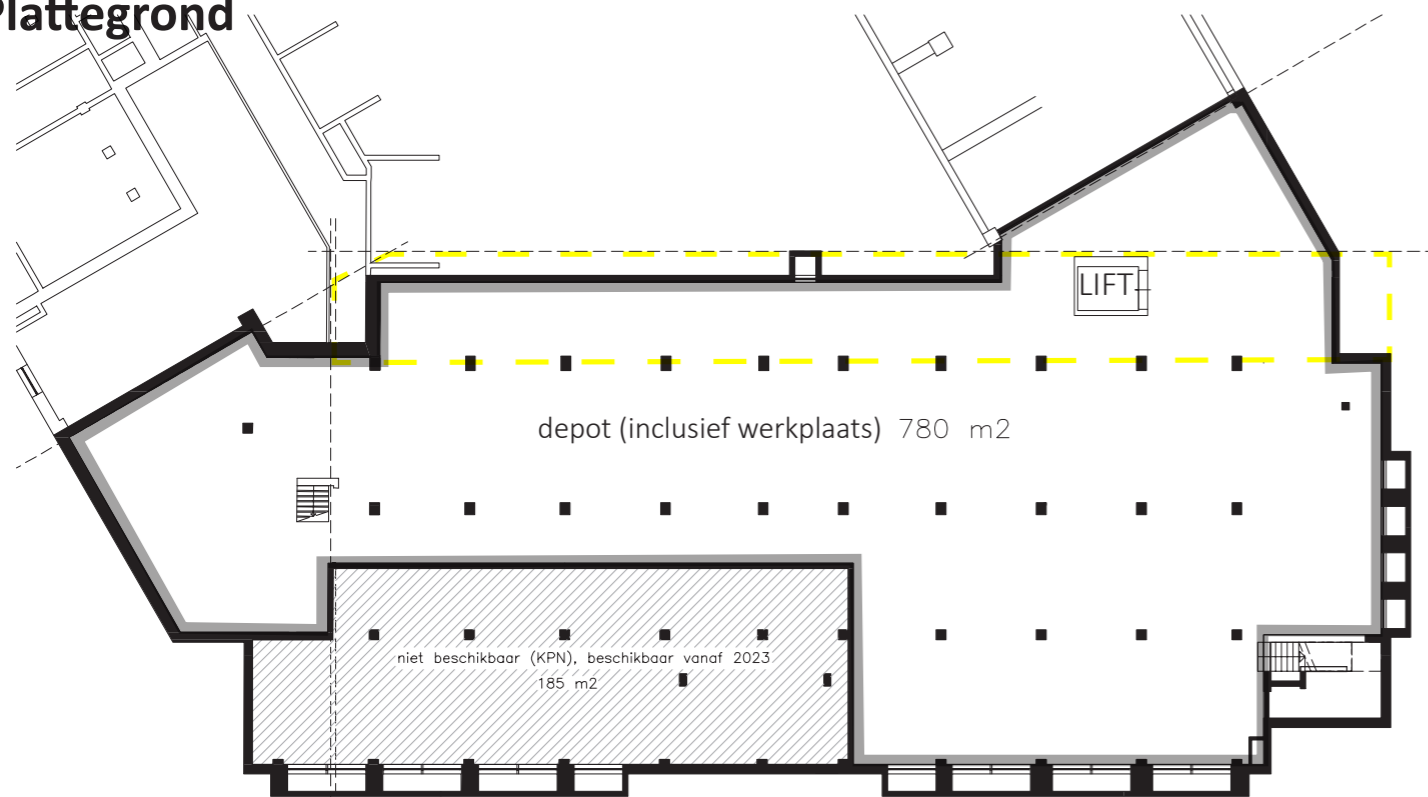


-  logistieke zone en ontvangst
-  museale ruimtes
-  facilitaire zone
-  impuls; gebiedsontwikkeling

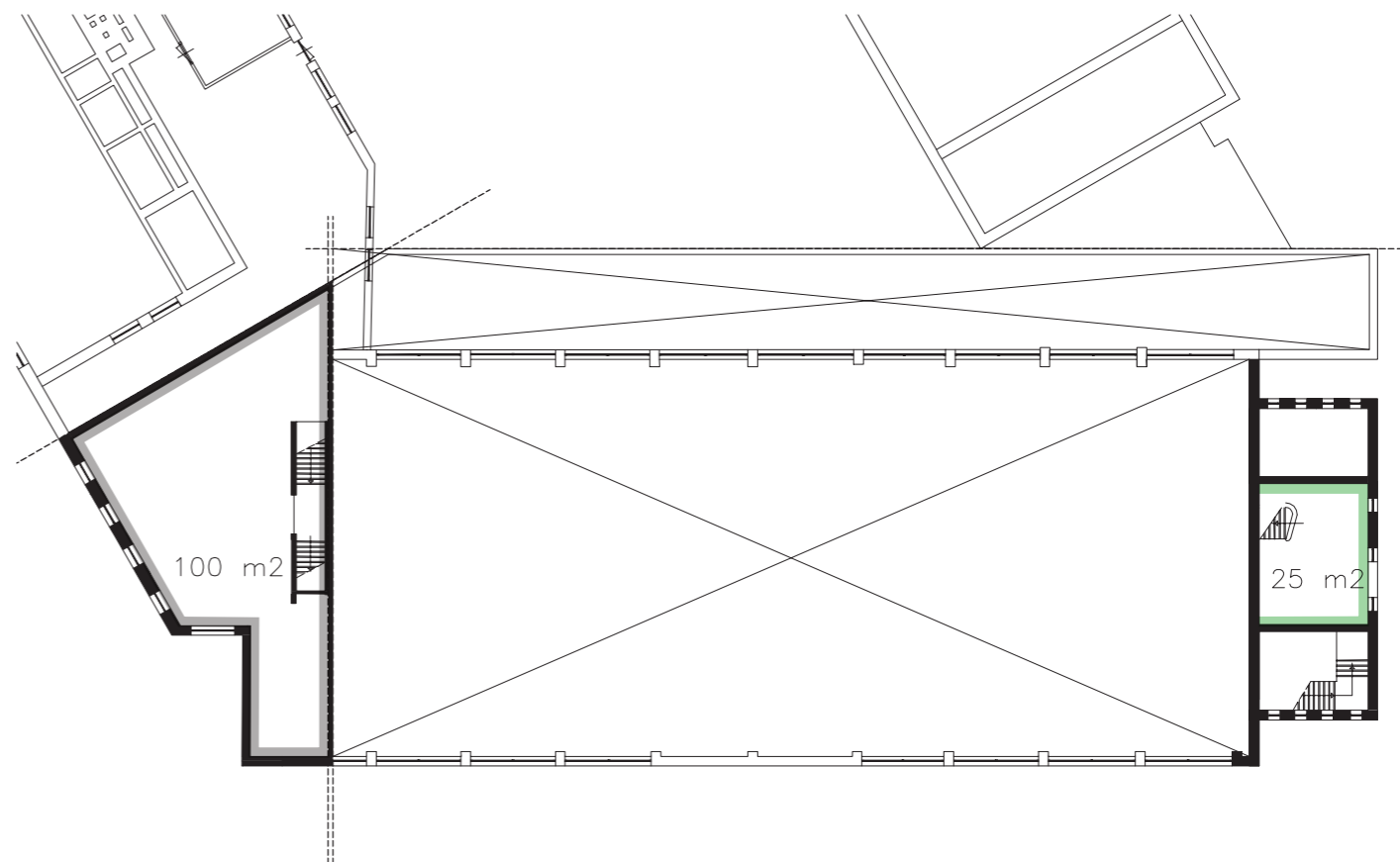
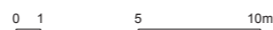
begane grond

0 5 10m

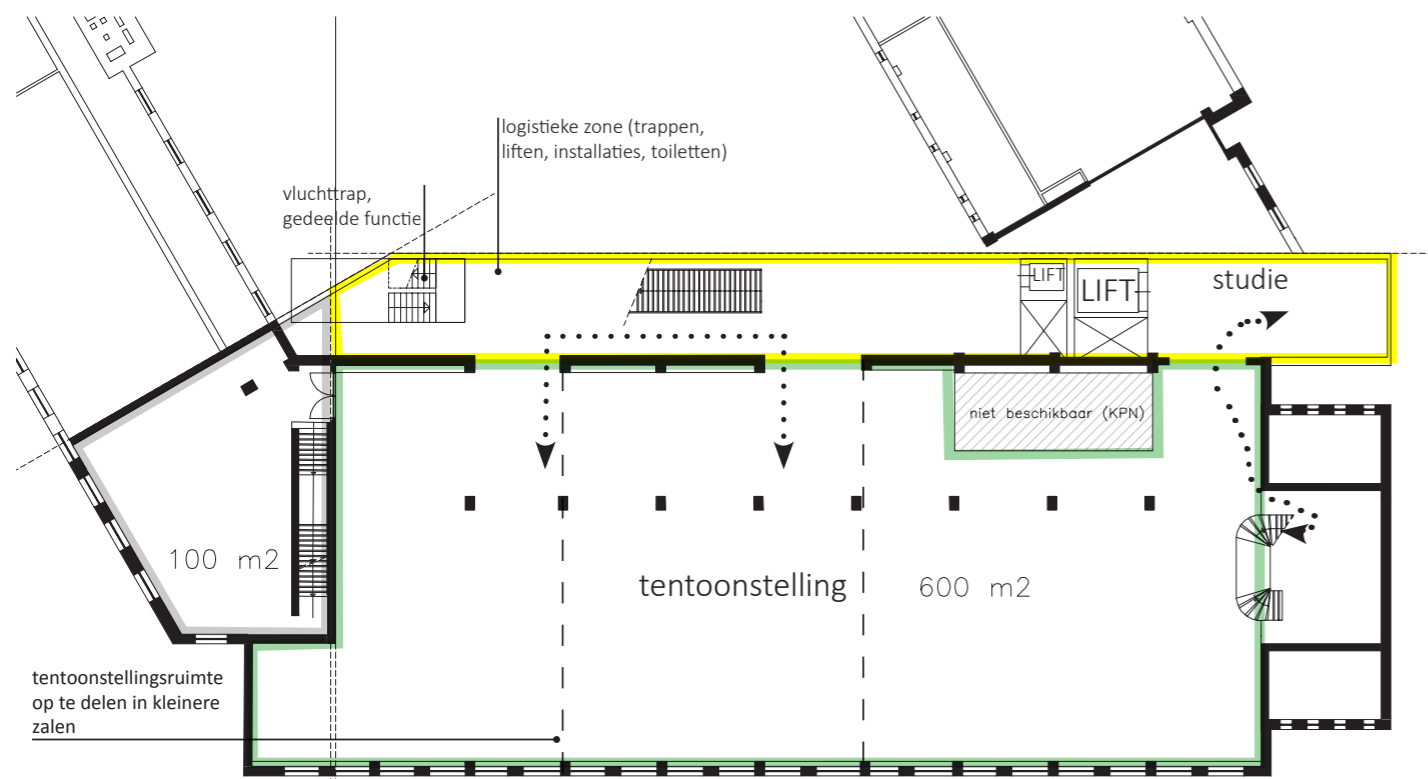
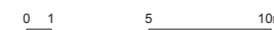
Plattegrond



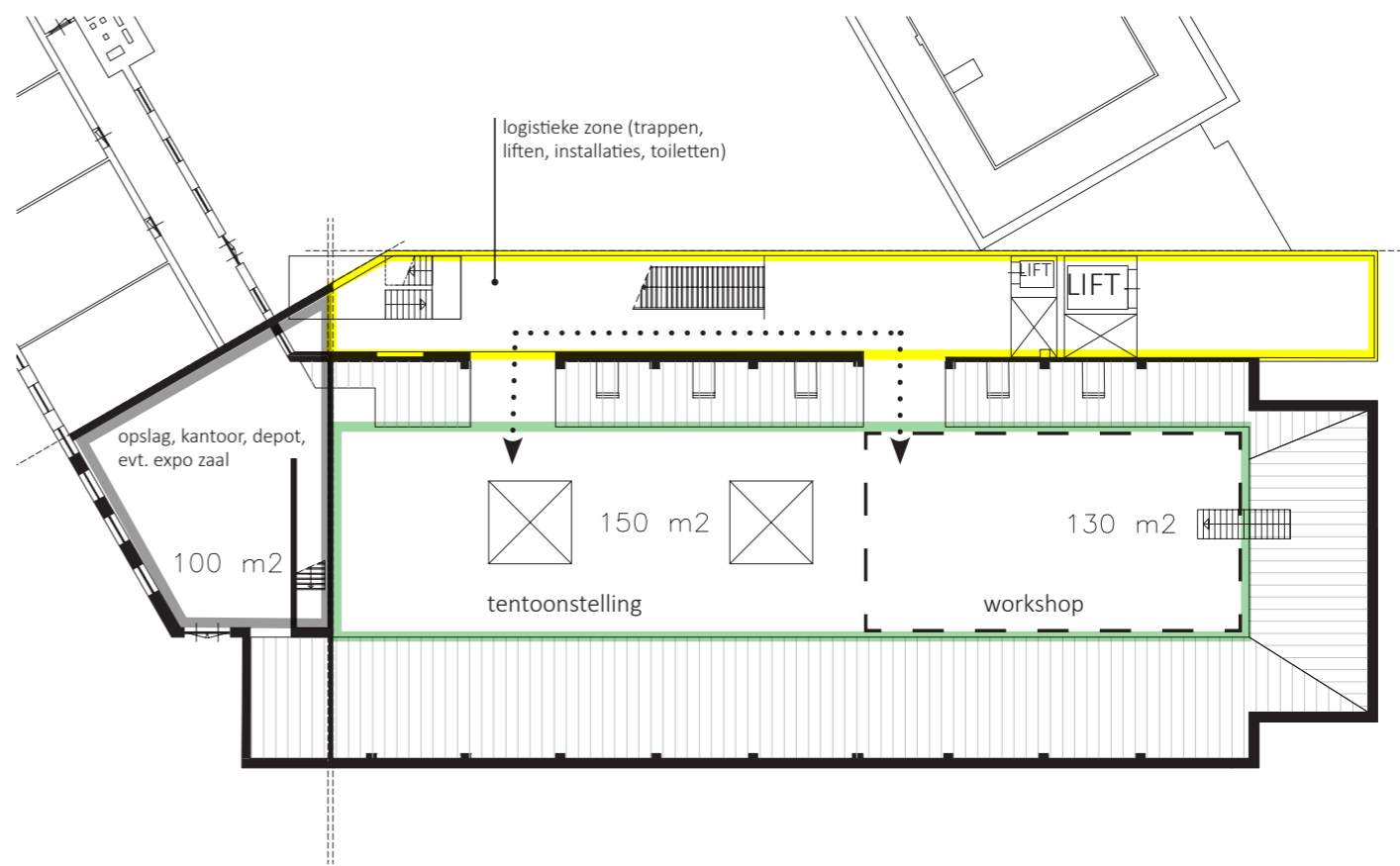
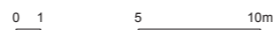
kelder



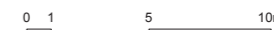
tussenverdieping



1e verdieping

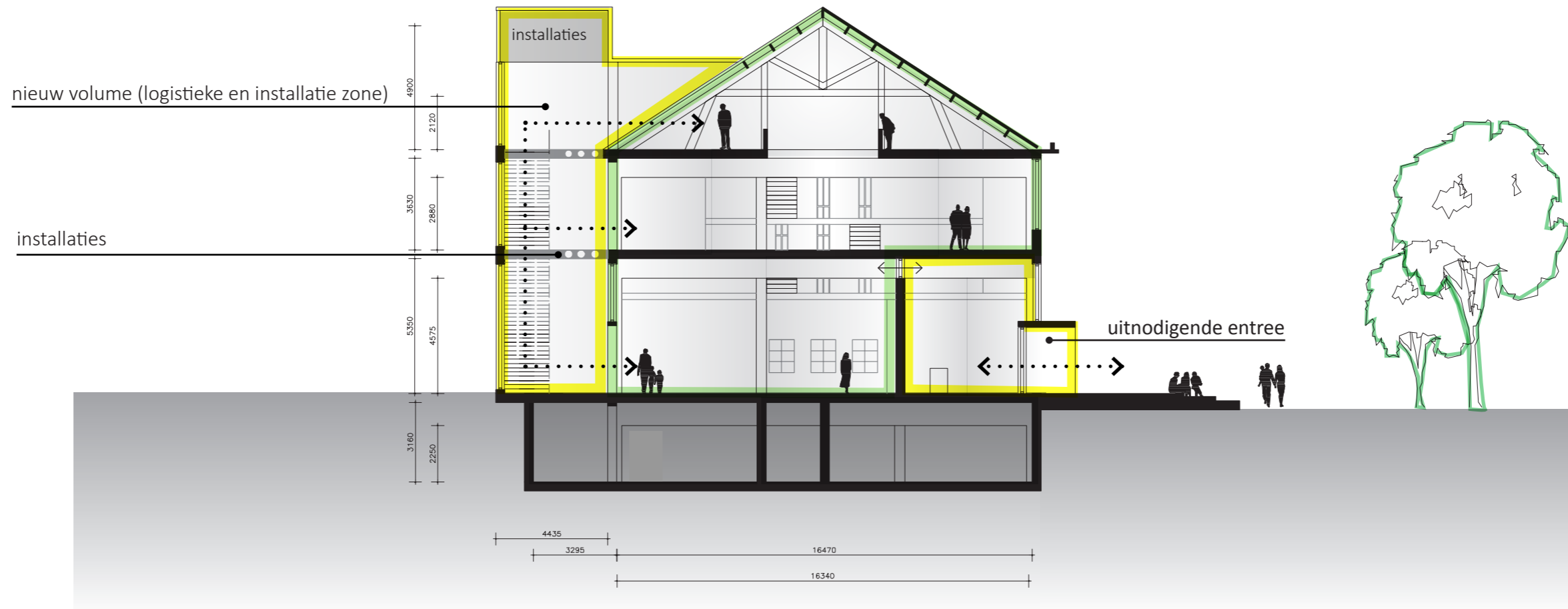





2e verdieping



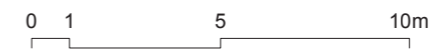
- logistieke zone en ontvangst
- museale ruimtes
- facilitaire zone

Doorsnede

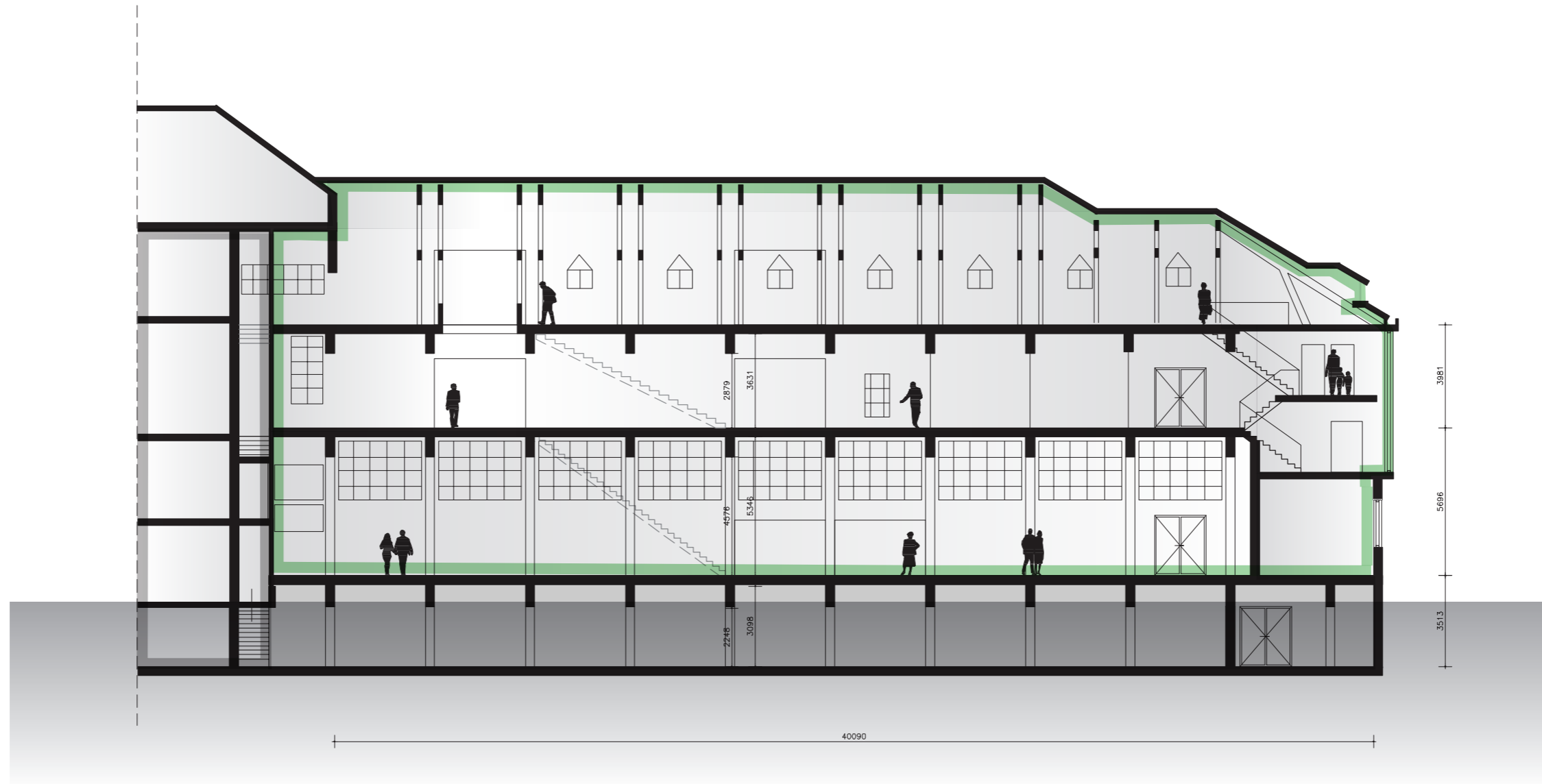


-  logistieke zone en ontvangst
-  museale ruimtes
-  depot

dwarsdoorsnede BB

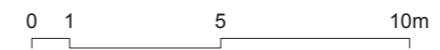


Doorsnede



- museale ruimtes
- facilitaire zone
- depot

langsdoorsnede AA



Ruimtelijk beeld



Ruimtelijk beeld

